

TSI

**TSI**

**TeDan Surgical  
Innovations**



**CT DIVISION**

**MINIMALLY  
INVASIVE...  
MAXIMUM  
ACCESS**



**ULTRAVISION™ CT**

# ULTRAVISION<sup>TM</sup> CT

## Minimally Invasive Retractor

*DESIGNED TO MEET THE NEEDS OF THORACIC ACCESS*

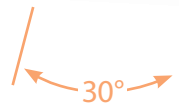
Minimally invasive retractor system reduces the potential for trauma and post-operative pain.

### CT-0100 ULTRAVISION<sup>TM</sup> Retractor Body

Maximum visualization with the smallest possible incision.



Blades pivot up to 30° after being placed in wound, increasing visibility without increasing incision size.



Retractor blades conform to shape of ribs to distribute & minimize pressure on intercostal nerve.



Light channels available on blades to illuminate the surgical site with no shadows.



ULTRAVISION<sup>TM</sup> CT

Use **Phantom ML Articulating Accessory Arm Straight Column w/ Quick Connector (ML-0039)**, **Table Clamp (ML-0041)**, and **Rack Clamp (ML-0044)** for additional stability.

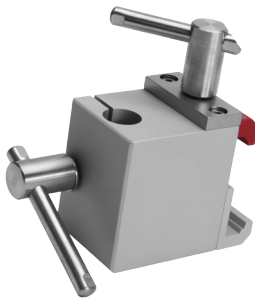
**- ALSO AVAILABLE -**

ML-0040 Articulating Accessory Arm

ML-0043 Phantom ML Instrument Holder w/ Quick Connect f/ Articulating Arm



ML-0039



ML-0041



ML-0044

**Phantom ML LED Light Source & Light Cables with TeDan Connector** illuminate the surgical site with no shadows.

## Pivoting Mechanism and Light Ports for Optimal Visualization



ML-0051  
Bright,  
100-watt LED  
light source,  
low heat



ML-0046  
Single Use Only



ML-0048  
Reusable



ML-0048  
Strong Curve Tips

# ULTRAVISION™ CT

Minimally Invasive Retractor

DESIGNED TO MEET THE NEEDS OF THORACIC ACCESS



Available WITH and WITHOUT light channels



## Ultravision™ CT X-Small Blades – Green

- CT-0110 X-Small Blade Curved, 45X35mm, Green
- CT-0111 X-Small Blade Upper Rib (Reverse Curve), 45X35mm, Green
- CT-0114 X-Small Blade Curved, 45X35mm, W/ Light Channel, Green
- CT-0115 X-Small Blade Upper Rib (Reverse Curve), 45X35mm, W/ Light Channel, Green



X-Small Depth Blade for X-Small Patients

CT-0114 / CT-0115



CT-0124 / CT-0125

## Ultravision™ CT Small Blades – Red

- CT-0120 Small Blade Curved, 45X50mm, Red
- CT-0121 Small Blade Upper Rib (Reverse Curve), 45X50mm, Red
- CT-0124 Small Blade Curved, 45X50mm, W/ Light Channel, Red
- CT-0125 Small Blade Upper Rib (Reverse Curve), 45X50mm, W/ Light Channel, Red

## Ultravision™ CT Medium Blades – Blue

- CT-0130 Medium Blade Curved, 45X70mm, Blue
- CT-0131 Medium Blade Upper Rib (Reverse Curve), 45X70mm, Blue
- CT-0134 Medium Blade Curved, 45X70mm, W/ Light Channel, Blue
- CT-0135 Medium Blade Upper Rib (Reverse Curve), 45X70mm, W/ Light Channel, Blue



CT-0134 / CT-0135

Ideal For Ultra Small Incisions and Robotic Surgery



CT-0160 / CT-0161

## Ultravision™ CT Port Blades – Gold

- CT-0160 Port Blade Curved, 30X50mm, W/ Light Channel, Gold
- CT-0161 Port Blade Upper Rib (Reverse Curve), 30X50mm, W/ Light Channel

## Ultravision™ CT Flat Blades

- CT-0140 Flat Blade – Sternal, 50X60mm
- CT-0142 Flat Blade – Sternal – Small Patient, 50X40mm
- CT-0144 Flat Blade – Sternal, 50X60mm, W/ Light Channel
- CT-0145 Flat Blade – Sternal – Small Patient, 50X40mm, W/ Light Channel



CT-0144 / CT-0145